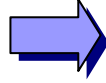
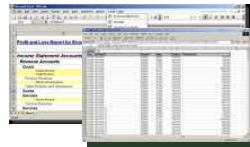
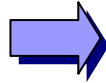


Grey Sparling Excel Add-in

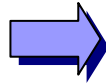
Reduced
Mouse-clicks



Lower IT
Costs



Closed Loop
Reporting



The Grey Sparling PS/nVision Excel add-in is a must-have for any organization who uses Excel with their PeopleSoft application. With this product, organizations can utilize the power of PS/Query and PS/nVision to get better information, and to act on this information.

This product not only automatically formats and links your existing reports and Queries together to support analysis; it also allows those reports and reporting tools to be used to streamline the work done by your employees in PeopleSoft.

In other words, reports run by your employees can be used to facilitate further analysis or can

be used as a list of items to work (with automatic navigation directly into the PeopleSoft pages from the reports).

In less than 1 hour, you can install the add-in and deliver to your users the power and flexibility they expect with the reports you already have.

Features

This product improves your use of nVision with the following features:

1. **AUTOMATIC FORMATTING OF QUERIES**, that automatically applies formatting rules and autofilters to your query results.

This means that your IT department will spend less time building reports to improve the formatting of queries, because they will already be well formatted

1	Personal Information for Dept	242			
2	DeptID	ID	Display Name	Address 1	City
14	10000	KC0014	David Henderson	2532 Cambie Street	Springfield
34	10000	KCL052	Jon Lee	8151 Lombard Way	St. Louis
51	10000	KCLO01	Jon Pierre	8101 Lombard Way	Sughami-ku
52	10000	KCLO02	Jon Chancellor	8102 Lombard Way	Syracuse
63	10000	KCLO03	Jon Gunner	8103 Lombard Way	Toronto
64	10000	KCLO04	Jon Francis	8104 Lombard Way	Toshima-ku
65	10000	KCLO05	Jon Vito	8105 Lombard Way	Urayasu
66	10000	KCLO06	Jon McMannes	8106 Lombard Way	Washington
67	10000	KCLO07	Jon Reeves	8107 Lombard Way	Waterloo
68	10000	KCLO08	Jon Hilliard	8108 Lombard Way	Wellington
69	10000	KCLO09	Jon Lowe	8109 Lombard Way	Winnipeg
60	10000	KCLO10	Jon Gerald	8110 Lombard Way	Winson Hills
61	10000	KCLO11	Jon Penny	8111 Lombard Way	WOONG TAI SIN
62	10000	KCLO12	Jon Hunter	8112 Lombard Way	Woolahra
63	10000	KCLO13	Jon Tressman	8113 Lombard Way	Zürich
64	10000	KCLO14	Jon Lemer	8114 Lombard Way	(Blanks)
65	10000	KCLO15	Jon Samuel	8115 Lombard Way	(NonBlanks)
245					

2. **A CONFIGURABLE EXCEL MENU** that allows the user to select and execute a drilldown by selecting an item directly from that menu.
3. **DRILLING INTO PS/QUERIES AND PEOPLESOFT PAGES**, with the required context automatically figured out. You do not need to modify your reports to embed hyperlink functions or write VBA code to enable drilling.
4. **AUTOMATIC DRILLDOWN NAVIGATION** that allows you to embed rules into your nVision reports for associating nVision drilldown layouts to chartfield values or tree nodes in the

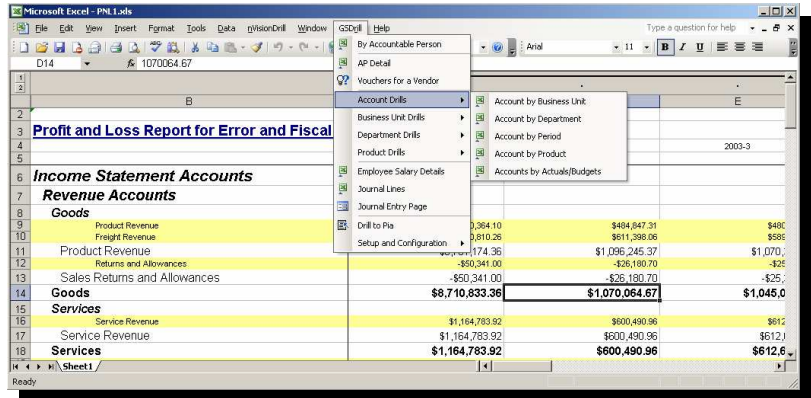
report. The user double-clicks on a number to be drilled and the product evaluates the rule and automatically picks and runs the report with no user intervention.

5. **REPAIRING THE DRILL URLS** embedded in reports, so that old reports will still be drillable, even if you change web servers.
6. **SIMPLE AND EASY DEPLOYMENT.** You can install and begin using this product within 2-3 hours.

Benefits

With these features, you can leverage the following benefits:

1. **INCREASED ADOPTION** of you the PeopleSoft reporting tools you already own as well as extending the ROI of your existing investment in PS/Query and PS/nVision reports.
2. **IMPROVED PRODUCTIVITY** of your analysts. Because they can easily drill into pages and queries to more easily analyze results or take action on information in their reports and queries, your analysts can work more efficiently, make better decisions, and spend less time finding the information they need.
3. **REDUCED REPORT DEVELOPMENT AND ADMINISTRATION COSTS.** There is no need to modify your existing reports to leverage any of these features (especially drilling to pages or queries).



Who is Grey Sparling Solutions, Inc?

Grey Sparling Solutions, Inc. was founded to provide PeopleSoft customers enhanced functionality to meet their business needs using their existing PeopleSoft systems. Our products are built and deployed in a manner that eliminates implementation, upgrade, and integration risks.

Because we are the people who built PeopleTools, we are able to use our expertise to create products that are easy to deploy and use, while meeting the needs of the PeopleSoft customer.

Interested in learning more?

Please contact us at (925) 217-1298 or at TellMeMore@GreySparling.com. We would be happy to talk with you about how we can help you leverage your existing PeopleSoft investment more effectively.

OUR MISSION:

We started Grey Sparling Solutions to help PeopleSoft customers protect their investment in their PeopleSoft systems and bridge the gap to Fusion.

As the former technology strategists at PeopleSoft, we've been involved in defining the next generation of PeopleSoft technology multiple times.

We recognized that PeopleSoft customers can take advantage of many of these benefits today, while they wait for Fusion.